



Northeastern University College of Professional Studies

MASTER OF EDUCATION

Master of Education in Higher Education Administration
Master of Education in Learning and Instruction
Master of Education in Special Education

Harness the power of experiential education to lead innovation
in teaching and learning

18-24 MONTHS



CONTENTS

About Northeastern University	03
About the Master of Education	04
Understanding the M.Ed. Programs	05
What Makes These Programs Unique	06
Master of Education in Higher Education Administration	07
Master of Education in Learning and Instruction	09
Master of Education in Special Education	11
Meet the Faculty	13
Application Process	16
About upGrad	17
Contact Us	18

ABOUT NORTHEASTERN UNIVERSITY

Founded in 1898, Northeastern is a global research university and the recognized leader in experiential lifelong learning. Our approach of integrating real-world experience with education, research, and innovation empowers our students, faculty, alumni, and partners to create worldwide impact.

Our global university system provides our community and academic, government, and industry partners with unique opportunities to think locally and act globally. The system, which includes 13 campuses across the U.S., U.K., and Canada, 320,000-plus alumni, and more than 3,800 partners worldwide, serves as a platform for scaling ideas, talent, and solutions.

Northeastern's personalized, experiential undergraduate and graduate programs lead to degrees through the doctorate in 10 colleges and schools across our campuses. Learning emphasizes the intersection of data, technology, and human literacies, uniquely preparing graduates for careers of the future and lives of fulfillment and accomplishment.

Our research enterprise, with an R1 Carnegie classification, is solutions oriented and spans the world. Our faculty scholars and students work in teams that cross not just disciplines, but also sectors—aligned around solving today's highly interconnected global challenges and focused on transformative impact for humankind.

Accreditation:



Ranking:

#369 ranking by



Ranked top 100 by

Forbes
in the US

Top 100 universities
globally by



#8 Most Innovative
School by



#1 in Co-ops/
Internships





ABOUT MASTER OF EDUCATION PROGRAMS

Northeastern University's Master of Education (M.Ed.) programs are designed to empower professionals to lead meaningful change in education. Whether you work in schools, universities, or alternative learning spaces, you'll gain the tools to reimagine learning environments, influence policy, and create inclusive, future-ready education systems.

Delivered in a flexible online format, these programs bring together a global community of educators, administrators, and changemakers from across sectors. You'll collaborate with peers who reflect the diverse and complex realities of today's educational landscape.

Through industry-connected projects (Experiential Network), a capstone, and a professional ePortfolio, you'll apply what you learn to drive tangible outcomes. Across all programs, Northeastern's M.Ed. programs develop education leaders who bridge theory and practice to create systemic impact, with clarity, purpose, and intention.

UNDERSTANDING THE M.Ed. PROGRAMS

Designed to meet diverse needs in education, each Northeastern M.Ed. program is built to address unique educational challenges. Find the program that aligns with your purpose and aspirations.



Master of Education in Higher Education Administration

Provides the foundation to understand the structure, governance, and operation of various higher education organizations, integrating opportunities for students to discuss current trends and issues in higher education. The program offers a theoretical foundation and real-world application of the skills graduates need to excel in mid-level and leadership roles across higher education. Its scholar-practitioner model integrates academic research with practical application.



Master of Education in Learning and Instruction

Emphasizes designing engaging, inclusive instruction, implementing research-based assessment practices, and adapting to dynamic educational contexts influenced by social and institutional change. Graduates gain the expertise to lead meaningful educational transformations that support diverse learners and foster equitable, future-ready classrooms.



Master of Education in Special Education

Equips educators with the skills to support students with moderate disabilities through evidence-based instructional strategies, inclusive classroom practices, and effective implementation of Individualized Education Plans (IEPs). The program also explores the broader policy and systemic factors shaping special education, preparing graduates to advocate for equitable access and drive positive change within schools and communities.

WHAT MAKES THE NORTHEASTERN PROGRAMS UNIQUE



Experiential Network (XN)

Collaborate with industry partners on real-world projects through Northeastern's XN (Experiential Network), gaining valuable experience by contributing to real-time solutions across diverse educational settings.



ePortfolio

Build a digital portfolio throughout the program to showcase your skills, projects, and accomplishments to potential employers.



Capstone Course

Address a real-world problem in higher education, present your research to experienced practitioners, participate in mock interviews, and receive feedback to refine your professional competencies.



Experiential Learning Focus

Engage in hands-on teaching practices that connect educational theory to authentic classroom challenges.



Diverse Professional Network

Join a vibrant community of education professionals from varied backgrounds, enriching your learning journey through a wide range of perspectives.



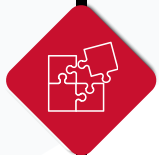
MASTER OF EDUCATION IN HIGHER EDUCATION ADMINISTRATION

What are the program learning outcomes?



Navigate Higher Education Law and Policy:

Understand and analyze regulations affecting colleges and universities.



Solve Complex Challenges:

Use data and theory to propose innovative solutions to today's higher education issues.



Champion Inclusion and Social Justice:

Turn principles of equity into concrete actions that make a difference.



Equip Yourself to Stay Ahead of the Curve:

Continuously develop your professional skills to meet the evolving demands of higher education.



Communicate with Impact:

Present your ideas clearly and effectively across multiple platforms to the right audience.

What roles would open up?

- Program Director
- Assistant Dean for Student Services
- Executive Director of Academic Advising
- Assistant Director
- Director of Financial Aid
- Director of Admissions
- Associate Director of Financial Aid
- Assistant Dean of Admissions
- Associate Director of International Education
- International Engagement Leadership Advisor
- Assistant Director of Global Initiatives
- Academic Advisor

Curriculum

Phase	Course Name
General Requirements	<ul style="list-style-type: none">• EDU 6051 Introduction to Social Justice in Educational Settings• EDU 6204 The Foundations of Higher Education
Required Courses	<ul style="list-style-type: none">• EDU 6205 The Demographics of the New College Student• EDU 6217 The History of Colleges and Universities• EDU 6218 Money Matters: Financial Management in Higher Education• EDU 6219 Higher Education Law and Policy• EDU 6234 Program Evaluation, Assessment, and Accreditation in Higher Education
Capstone	<ul style="list-style-type: none">• EDU 6222 Contemporary Issues Capstone
Electives:	<ul style="list-style-type: none">• Complete 12 quarter hours at the EDU 6000 level.

Note: Credits may differ as per the electives chosen

MASTER OF EDUCATION IN LEARNING AND INSTRUCTION

What are the program learning outcomes?



Demonstrate Instructional Expertise

Design inclusive and engaging learning environments grounded in research-based instructional theory, while examining the learner in context, across diverse settings and stages of development.



Integrate Professional Practice and Scholarship

Combine applied educational practice with academic inquiry by drawing from multiple subfields, evaluating the impact of societal and technological change on teaching and learning worldwide.



Lead Practice-Based Learning and Innovation

Implement real-world instructional strategies in collaboration with educators and stakeholders, using data-informed tools and methods to address learning gaps and promote equity.



Advance Civic, Global, and Intercultural Competence

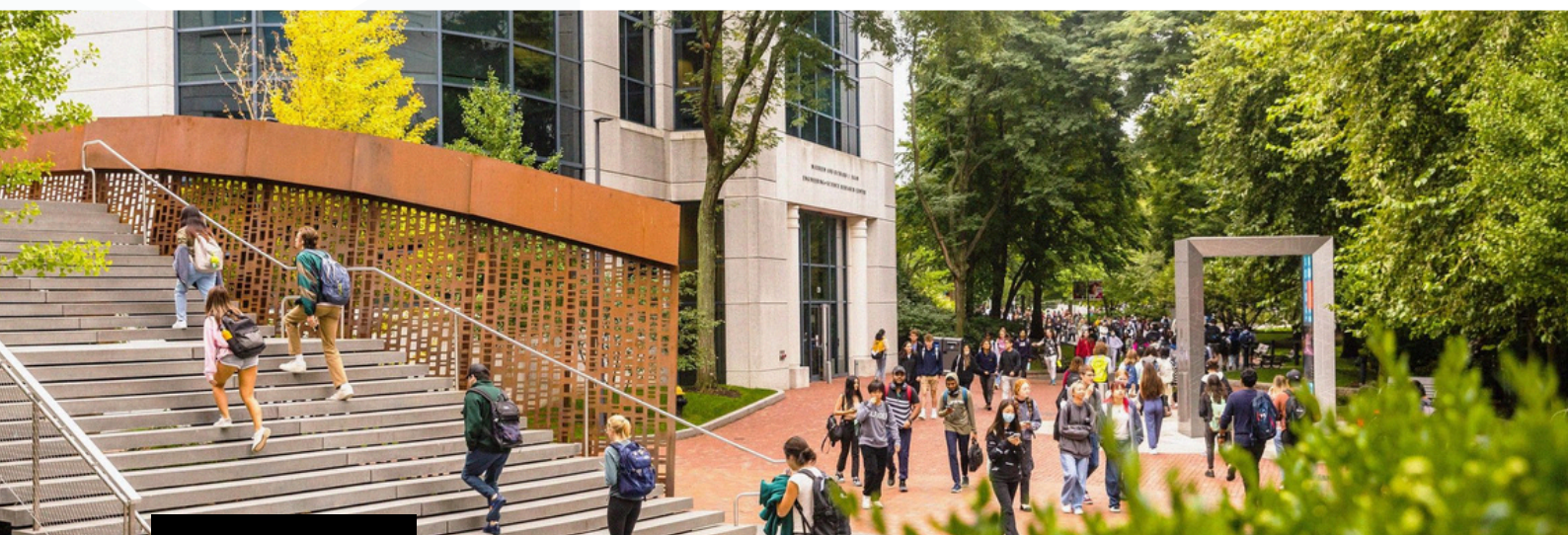
Explore education from a global perspective, developing critical insights into how institutional policy, cultural context, and community needs shape learning environments.

What roles would open up?

- Curriculum and Assessment Director
- Curriculum and Instruction Director
- School Standards Coach
- Instructional Systems Specialist
- Education Specialist
- Curriculum Coordinator
- Program Administrator
- Instructional Coach
- Curriculum Specialist
- Curriculum Director

Curriculum

Phase	Course Name
Required Courses:	<ul style="list-style-type: none">• EDU 6050 Education as an Advanced Field of Study• EDU 6051 Introduction to Social Justice in Educational Settings• EDU 6319 How People Learn• EDU 6336 Data Literacy for Data-Driven Decision Making• EDU 6410 Instructional Leadership 5• EDU 6415 Law, Policy, and the Ecosystem of Education
Capstone	<ul style="list-style-type: none">• EDU 6225 Capstone (to be taken last) or• EDU 6874 Practicum, Portfolio, and Panel Review
Electives:	<ul style="list-style-type: none">• Complete 16 quarter hours at the EDU 6000 level.



MASTER OF EDUCATION IN SPECIAL EDUCATION

What are the program learning outcomes?



Educate Diverse Learners Effectively

Develop the skills and mindset to support students with a wide range of learning needs through inclusive, research-based teaching practices.



Champion Educational Equity

Gain the tools to advocate for the rights of all learners and promote fair access to education across diverse school and community settings.



Navigate Education Systems

Understand how policy shifts at local, national, and global levels influence special education and apply this knowledge to your professional context.



Design Personalized Learning Plans

Learn to create and implement Individualized Education Plans (IEPs) that address unique academic and behavioral needs with precision and care.



Lead Institutional Change

Prepare to support inclusive transformation in schools by mentoring peers and contributing to system-level strategies for special education.

What roles would open up?

- Special Education Teacher (K–12)
- Inclusion Specialist
- Special Education Instructional Coach
- Transition Specialist
- Special Education Curriculum Developer
- IEP (Individualized Education Program) Coordinator
- Learning Disabilities Specialist
- Assistive Technology Specialist

Curriculum

Phase	Course Name
Required Courses:	<ul style="list-style-type: none"> • EDU 6050 Education as an Advanced Field of Study • EDU 6051 Introduction to Social Justice in Educational Settings • EDU 6425 Special Education: Role of Special Educators in an Inclusive School 1 • EDU 6426 Developmental Language, Literacy, and Writing: Assessment and Instruction • EDU 6438 Teachers as Curriculum Leaders • EDU 6528 Adaptive Learning/Behavior Management Strategies: Consultation and Collaboration • EDU 6569 Differentiated Instruction and Assessment in Mathematics 2 • EDU 6874 Practicum, Portfolio, and Panel Review
Electives:	<ul style="list-style-type: none"> • Complete 12 quarter hours at the EDU 6000 level.



MEET THE FACULTY

Alex Fronduto, D.H.Sc., is a full-time Associate Teaching Professor within the Graduate School of Education in the College of Professional Studies at Northeastern University, where he serves as the faculty lead for the Master of Education in Higher Education Administration program and chairs dissertations within the Doctor of Education (Ed.D.) program. His academic background includes a Bachelor of Science in Chemistry and Premedical and Health Studies, a Master of Education in Higher Education Administration from Northeastern University, and a Doctor of Health Science (D.H.Sc.) from the Massachusetts College of Pharmacy and Health Sciences.



Alex Fronduto

Associate Teaching
Professor

Dr. Mounira Morris is an Associate Teaching Professor and the lead for the Master of Education (M.Ed.) in Higher Education Administration (HEA) program. She has held leadership roles in diversity, equity, inclusion, and justice, as well as in student affairs, across multiple higher education institutions, including Clark University, Allegheny College, and Earlham College.

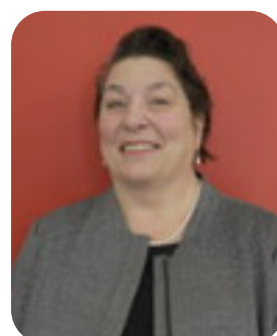
Dr. Morris earned her Master of Science (M.S.) in College Student Development and Counseling from Northeastern University and her Doctor of Education (Ed.D.) from the University of Massachusetts Amherst.



Mounira Morris

Associate Teaching
Professor

Dr. Kelly J. Conn has been a full-time faculty member since 2012, teaching courses in the Graduate School of Education. Informed by her previous career in laboratory science, she developed and taught two new courses in STEM education and contributed to the development of courses in educational leadership and research ethics. She earned her Ph.D. in biochemistry from Boston University and did postdoctoral work in neuroscience. Dr. Conn lives in Boston, and teaches in Boston and online and is the regional lead faculty member for the Ed.D. program in Hong Kong.



Kelly Conn

Associate Teaching
Professor

MEET THE FACULTY

Dr. Burkhardt teaches in the Graduate School of Education and the Global Studies and International Relations master's program at the College of Professional Studies. She is Master Teacher for the first and last courses in the M.Ed. program – Education as an Advanced Field of Study and the Capstone, and she has also taught undergraduate courses in Leadership and English. She earned her B.A. from Clark University, Worcester, MA, M.S. from the University of Bridgeport, Bridgeport, CT, and her Ed.D. from Northeastern.



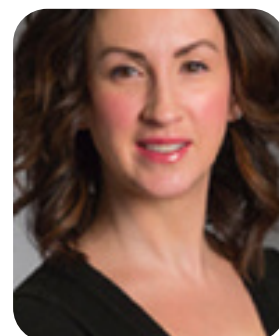
Joan Burkhardt
Associate Teaching
Professor

Shaunna Harrington teaches in the Master of Arts in Teaching program and the Master of Education program, and is the faculty lead for the Learning & Instruction concentration. She began her career as a social studies teacher in the Boston Public Schools, and has continued to focus her teaching and activism on equity and justice in K-12 education. She earned her M.A. in Teaching History from Boston University and Ph.D. in History from Northeastern University.



**Shaunna
Harrington**
Associate Teaching
Professor

Lydia R. L. Young is the Director of NExT, Northeastern University's Graduate School of Education network for experiential and equity-focused educators, and a Teaching Professor in Education. In her pedagogical practice and curriculum development, Dr. Young explores experiential teaching and learning, profession-based k12 learning, networked educators, critical literacy, fostering teacher candidates as change agents, and social constructivism. She earned her Master of Education degree from Boston College and Ph.D. in Curriculum and Instruction from Boston College.



Lydia Young
Teaching Professor

MEET THE FACULTY

Kari Thierer is an Assistant Teaching Professor in the Doctor of Education program. Her areas of expertise include student-centered learning, career and technical education, and authentic assessment. Dr. Thierer has almost 30 years of experience providing technical assistance and supporting research and evaluation efforts in schools, districts, state and federal education agencies, and nonprofit education organizations throughout the United States. She earned her Master's degree in Educational Leadership and Administration from University of Phoenix and Ed.D. in Curriculum, Teaching, Learning and Leading from Northeastern University.



Kari Thierer

Assistant Teaching
Professor



APPLICATION PROCESS



Apply on <http://www.upgrad.com/med-from-northeastern-university>



Share your SOP and documents on the Slate-form shared by your Admissions Counselor



Northeastern admissions committee will evaluate your application



Upon acceptance, block your seat by paying the enrollment deposit.

ABOUT upGrad

upGrad is a leading online education platform empowering professionals to reach their full potential through flexible, engaging learning experiences.

We partner with top global universities, including Golden Gate University, Edgewood College, ESGI International School of Management Paris, Liverpool Business School, Paris School of Business, Liverpool John Moores University, among others to offer a wide range of career-focused programs.

As professionals juggle demanding careers and personal commitments, traditional education often feels out of reach. upGrad bridges this gap by making high-quality learning accessible and practical, so education becomes an enabler, not a hindrance.

To date, upGrad has delivered over 20 million hours of learning, empowering thousands of learners worldwide with the knowledge and skills to advance their careers.



**BRANDON HALL
GOLD AWARDS**
15+ Across 2 Years



GSV EDTECH 150
Top 150 Most
Transformative
Growth Companies



**PROMISING BRAND
2022**
The Economic Times




upGrad

upgrad.com

For further details, contact -

Europe, Middle East and Africa:


 info.emea@upgrad.com

 Europe and Africa: +44-20-4602-3556

Middle East: + 971-4-871-4102

Vietnam and Thailand


 info.emea@upgrad.com

 Vietnam: 1900232306

Thailand: 975310719


North and South America:

 globaladmissions@upgrad.com

 +1 240-719-6120

Asia Pacific except India:

 query@upgrad.com

 + 65-6232-6730

This brochure is for informational purposes only and is subject to change. The Offer Letter is the sole legally binding agreement, overriding all prior communications. Please refer to it for the final Terms and Conditions.